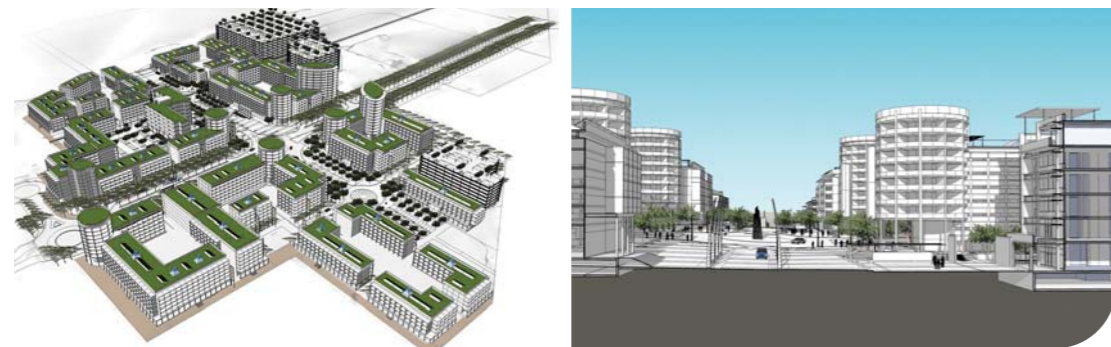


IF YOU WANT YOUR BUSINESS TO REALLY TAKE OFF, GET A TRADEPORT.



3 King Shaka International Airport

1 dube city



Call for Proposals for the development of commercial and business sites within a 12 hectare commercial property development at Dube City, adjacent to the new King Shaka International Airport, Durban.

La Mercy JV Property Investments (Pty) Ltd (Reg No. 2008/009008/07) ("the Master Developer") hereby invites interested parties to submit proposals for the long-term lease and development of sites for upmarket retail, office and hotel opportunities. Proposal Call Documents will be available for a non-refundable fee of R1000.00 from Friday, 5 February 2010 at Dube Tradeport offices: 22 Dorothy Nyembe (Gardiner) Street, 15th Floor, The Marine, Durban, 4001.

Paula Pather
 Tel: +27 31 307 2857
 Fax: +27 31 307 2636
 Email: paula@dubetradeport.co.za
 22 Dorothy Nyembe (Gardiner) Street,
 15th Floor, The Marine, Durban, 4001.

2 dube tradezone



Call for Proposals for the development of light industrial sites within a 26 hectare commercial property development at Trade Zone, adjacent to the Dube Tradeport Cargo Terminal at the new King Shaka International Airport, Durban.

The Dube Tradeport Company ("the Master Developer") hereby invites interested parties to submit proposals for the long-term lease and development of sites for air freight dependent light industry, manufacturing, assembly, logistics, warehousing and distribution facilities. Proposal Call Documents will be available for a non-refundable fee of R1000.00 from Friday, 5 February 2010 at Dube Tradeport offices: 22 Dorothy Nyembe (Gardiner) Street, 15th Floor, The Marine, Durban, 4001.

Paula Pather
 Tel: +27 31 307 2857
 Fax: +27 31 307 2636
 Email: paula@dubetradeport.co.za
 22 Dorothy Nyembe (Gardiner) Street,
 15th Floor, The Marine, Durban, 4001.

