

I-Dube TradePort Corporation

INkampani kaHulumeni wesiFundazwe
ekuShedluli 3C ngokwe-PFMA

Imanuwali ye-PAIA

Njengoba idingeka ngokwesigaba 14 soMthetho
Wokugqugquzela Ukutholakala Kolwazi, 2 ka
2000

IMANUWALI YE-PAIA YE-DUBE TRADEPORT CORPORATION

Inombolo yombhalo:	IM-PAIA-001	Inombolo yokubuyekwezwa:	002
Umbhali:	Tanya Wingfield	Isikhundla:	Information Manager
Ibuyekwezwe ngu:	Zodwa Mbatha	Isikhundla:	Corporate Services Executive
Igunyazwe ngu:	Hamish Erskine	Isikhundla:	Chief Executive Officer
Iqala ukusebenza:	01 Januwari 2017	Usuku lokubuyekwezwa:	02 Januwari 2018
Isimo seManuwali:	Ukubuyekwezwa kweManuwali ye-Dube TradePort Corporation – kwaminyaka yonke ngokwe-PAIA		

Okuqukethwe

YIMANUWALI YE-DUBE TRADEPORT CORPORATION NGOKWE-PAIA	2
1. Izincazelo	Error! Bookmark not defined.
2. Izingeniso	Error! Bookmark not defined.
3. Ijoka le-DTPC	5
3.1. Umbono	5
3.2. Injongo	5
4. Imisebenzi neziNhlaka, Isigaba 14 (1) (A).....	6
5. Abasebenzi Bezolwazi Neminingwane Yokuxhumana, Isigaba 14(A) (B)	6
5.1. I-Information Officer	7
5.2. I-Deputy Information Officer	7
6. Isigaba 10: Itholakala kanjani incwajana, Isigaba 10 no 14(1) (c)	7
7. Ukuthola amarekhodi ngokwesigaba 14 (1) (E) (Ukudalulwa Okungenamidanti)	7
8. Ukuthola amarekhodi ngokwesigaba 14 (1) (D).....	8
9. Inqubo yokufaka isicelo	Error! Bookmark not defined.
9. 1. Imithetho elandelwayo	9
9. 2. Uhlelo lokufaka isicelo	9
9.3. Ukucutshungulwa kwesicelo	11
10. Inqubo yokukhokha	Error! Bookmark not defined.
10.1. Izimali ezikhokhwayo	12
10.2. Isaziso sezimali ezikhokhwayo	Error! Bookmark not defined.
10.3. Imininingwane yaseBhange yeDTPC	12
10.4. Ukukhululwa ngokwesigaba 22(8)	13
11. Izinyathelo ezithathwa ngokwesigaba 14(1) (H)	13
12. Ukuvuselela iManuwali ngokwesigaba 14 (2)	13
13. Ukutholakala kwemanuwali 14(3).....	14
14. Izithasiselo ezihambisana nayo	14

1. Izincazelo

Kule Manuwali, ngaphandle uma ingqikithi isho okwehlukile:

"izimali zokuthola amarekhodi" kushiwo izimali ezinqunyiwe zokukhokhela ukugaywa kabusha nokubheka nokulungisa, nezesikhathi esidingekayo esingale kwesikhathi esibekiwe sokubheka nokulungisa irekhodi ukuze lidalulwe;

"uMthethosisekelo" kushiwo uMthethosisekelo weRiphabhlikhi yaseNingizimu Afrika, 1996 (uMthetho No. 108 ka 1996)

"U-Deputy Information Officer" kushiwo u-DIO, onikezwe amandla yi-Information Officer ukuze enze imisebenzi edingekayo ngokwe-PAIA;

"iDTPC" kushiwo iDube TradePort Corporation;

"i-Information Officer" kushiwo i-Chief Executive Officer, noma isikhulu esisezingeni elicishe lifane, noma umuntu ibambile kuleso sikhundla futhi lowo muntu uyobizwa nge-CIO;

"iPAIA" kushiwo uMthetho Wokugqugqezela Ukutholakala Kolwazi, 2000 (uMthetho No 2, ka 2000);

"ocela ulwazi oluphathele naye" kushiwo ofake isicelo ecela irekhodi eliqukethe ulwazi oluphathele naye lowo ofaka isicelo;

"uMgwamanda kaHulumeni" kushiwo:

a) noma yimuphi umnyango woMbuso noma kahulumeni ezingeni likazwelonke noma lesifundazwe nanoma yimuphi umasipala ezingeni lohulumeni basekhaya; noma

b) yinoma yisiphi isikhungo noma uhlaka uma-

(i) lwenza imisebenzi noma lusebenzisa amandla alo ngokomthethosisekelo noma ngokomthethosisekelo wesifundazwe; noma

(ii) lusebenzisa amandla alo noma lwenza imisebenzi yalo esemthethweni ngokwanoma yimuphi umthetho.

"irekhodi" kushiwo ulwazi oluqoshiwe, kungakhathaleki ukuthi luqoshwe ngani noma luqukethwe kuphi, olugcinwe noma olulawulwa yiDube TradePort Corporation, kungakhathaleki futhi ukuthi lwaluhlanganiswe noma lwakhiwe yiDube TradePort noma cha;

"isicelo" kushiwo isicelo sokuthola irekhodi leDube TradePort Corporation.

"umfakisisicelo" kushiwo noma yimuphi umuntu (ngale kwemigwamanda ethile kahulumeni noma abasebenzi bayo) ofaka isicelo sokuthola irekhodi leDube TradePort Corporation futhi kubandakanya noma yimuphi umuntu ofaka isicelo egameni lalowo muntu noma lomfakisisicelo.

"iSAHRC" kushiwo iKhomishana Yamalungelo Abantu yaseNingizimu Afrika.

"umuntu wesithathu" kushiwo irekhodi lanoma yimuphi omunye umuntu, kungacini kwelikahulumeni welinye izwe, inhlango yamazwe ngamazwe noma uhlaka lwalowo hulumeni, ngale komfakisisicelo othintekayo nomgwamanda kahulumeni.

2. Isingeniso

UMthetho Wokugqugqezela Ukutholakala Kolwazi (PAIA) udinga ukuthi kushicilelwe imanuwali yePAIA ezeza imininingwane yamarekhodi agcinwe yileyo naleyo nhlangano kahulumeni ukuze kuzosizakala abafuna ukufaka izicelo zalawo marekhodi.

IPAIA ihlose ukuqalisa ukusebenza kwezinhlinzeko zesigaba 32 soMthethosisekelo esithi wonke umuntu unelungelo lokuthola ulwazi olugcinwe uMbuso noma olugcinwe womunye umuntu oludingekayo ukuze kusetshenziswe noma kuvikelwe noma yimaphi amalungelo.

Izinhlalo zePAIA ukukhuthaza ukubekwa kwezinto obala, isibopho sokubika nohulumeni osebenza ngendlela kuzona zonke izinhlaka zikahulumeni nezizimele. Lokhu-ke kube sekunikeza

abantu ulwazi futhi kubafundise ukuze baqonde ngamalungelo abo, ngokwePAIA, abangakwazi ukuwasebenzisa nokuwavikela.

Le manuwali yakhelwe ukubeka inqubo elandelwayo nohlelo okumele kulangatshezwene nalo uma umuntu efuna ukuthola ulwazi olugcinwe noma olulawulwa yiDube TradePort Corporation (DTPC).

3. Ijoka leDTPC

I-DTPC iyiNkampani kaHulumeni wesiFundazwe ekuShedulie 3C esungulwe ngokoMthetho weDube TradePort 2 ka 2010 futhi ilawulwa ngokoMthetho Wokulawulwa Kwezimali Zomphakathi ka 1999, uMthetho 1 ka 1999 (PFMA).

3.1. Umbono

Umbono weDTPC "wukuba indawo engungqa phambili emhlabeni jikelele yokuthuthwa kwempahla e-Afrika eseNingizimu, eyakhiwe ngokuxhumana nemizila yomgqwaqo, kajatshi kaloliwe nengqalasizinda yasolwandle".

3.2. Injongo

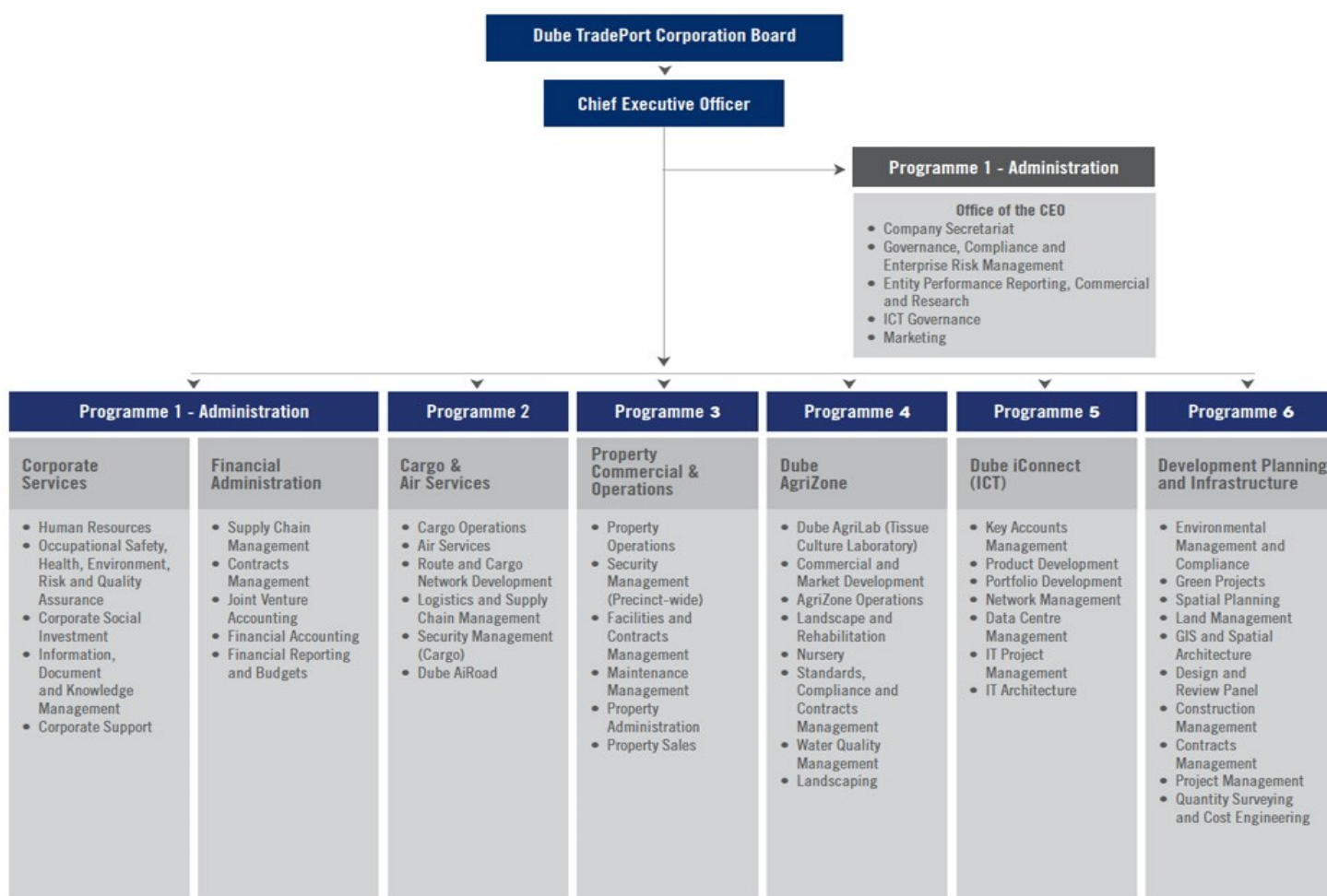
Injongo yeDTPC:

- Ukuhlelela ukwakiwa kwendawo yamabhizinisi esesikhumulweni ngokuhlinzeka ngengqalasizinda esezingeni eliphezulu nokuhlelwa kwendawo kwesimanjemanje;
- Ukuheha utshalomali ngokusungula nokulawula indawo ethile ekhethekile yezomnotho nezinye izindawo zamabhizinisi ezihambisana nayo; kanye
- Ukukhulisa amabhizinisi nohwebo ngokuvulela amathuba amasha okuthuthwa kwempahla ngamabhanoyi esifundeni nasemhlabeni jikelele.

4. Imisebenzi nezinhlaka, Isigaba14 (1) (A)

Ngolwazi oluthe xaxa mayelana nezinjongo ezibalulekile zeDTPC, uyanxuswa ukuba ubheke umbhalo othi: “DTPC – Strategic Plan for the fiscal years 2015-2020” otholakala kwiwebhusayithi (<http://www.dubetradeport.co.za/>)

I-DTPC njengamanje iholwa yisiKhulu esiPhezulu (CEO), eselekelelwa yiThimba Leziphathimandla (Executive Team) elibhekelele izinhlelo ezahlukahlukeni. Lo mdwebo ongezansi ukhombisa ukwakheka kohlaka lwabasebenzi, ezingeni eliphezulu, nemisebenzi eyenziwa yigatsha ngalinye:



Umdwebo Wohlaka Lokusebenza 1

5. Ama-Information Officers kanye neminingwane yokuxhumana, Isigaba 14(A) (B)

NgokwePAIA, isikhulu esiPhezulu (CEO) senhlangano kahulumeni yisona esiphatha isikhundla sokuba yi-Chief Information Officer (CIO). Imisebenzi ye-CIO ukhombisa indlela kwiDTPC

nokuqinisekisa ukuth kufezekiswa izinhlelo ezibalulekile zentuthuko ngokuhambisana namajoka eDTPC ngendlela ebophezela ukubika, ehlelekile nefanele.

Nansi imininingwane yokuxhumana yeCIO yakwaDTPC:

5.1. I-Chief Information Officer

Mnu Hamish Erskine Ikheli le-email: hamish.erskine@dubetradeport.co.za

5.2. I-Deputy Information Officer

Abafakizicelo bayanxuswa ukuba babhekise zonke izicelo zabo kwi-Deputy Information Officer (DIO). Imisebenzi ye-DIO ukudidiyela zonke izindaba eziphathelene nokubekwa kwezinto obala, imithetho nokucubungula izicelo ngokwePAIA. Imininingwane yokuxhumana yilena engezansi:

Nkz. T Wingfield

Ikheli le-email: Tanya.wingfield@dubetradeport.co.za

Ikheli lePosi:
PO Box 57757
King Shaka Airport
4407

Street Address:
29° South
7 Umsinsi Junction
La Mercy
Kwazulu-Natal
4399

Ucingo:
+27 32 814 0000

I-Fax:
+27 32 814 0103

6. Isigaba 10: Itholakala kanjani iManuwali, Isigaba 10 no 14(1) (c)

IManuwali iyatholakala kwiKhomishana Yamalungelo Abantu yaseNingizimu Afrika (SAHRC) noma kwiwebhusayithi yabo ethi: www.sahrc.org.za

Uma uneminye imibuzo mayelana nalokhu uyacelwa ukuba uxhumane ngqo ne-SAHRC kule mininingwane:

The South African Human Rights Commission
PAIA Unit
The Research and Documentation Department
Private Bag 2700
Houghton
2041

Ucingo: +27 11 484 8300
I-Fax: +27 11 484 0582
I-email: paia@sahrc.org.za

IManuwali iyatholakala futhi kwa-DTPC. Uyacelwa ukuba imibuzo yakho uyibhekise kwi-Deputy Information Officer ekhelini elingenhla.

7. Ukuthola Amarekhodi Ngokwesigaba 14 (1)(E) (Ukudalula okungenamidanti)

Amarekhodi athile angatholakala ngqo kwi-inthanethi ngokungena kwiwebhusayithi esemthethweni yakwa-DTPC ethi: <http://www.dubetradeport.co.za/> kanti ukhuthazwa ukuba ubheke lapha kuqala ngaphambi kokuthumela isicelo.

Akusiwona umgomo ukuthi kukhokhwe imali yesicelo, kodwa kuyoba khona izimali ezinqunyiwe ezikhokhwayo zokugaya kabusha nezokukhipha irekhodi. Bheka Isithasiselo 2 ngohlu lwamaRekhodi atholakala ngaphandle kwemidanti.

8. Ukuthola Amarekhodi ngokwesigaba 14(1) (D)

Le ngxenye yemanuwali iveza amarekhodi agcinwe yiDTPC ukuze akhishwe ngokwezicelo ezenziwe ngokwePAIA. Kodwa-ke, uyaziswa ukuthi ukuvela kwerekhodi elithile kulolu hlu olungezansi lwemanuwali akuqinisekisi ukuthi uyovunyelwa ukuthola lelo rekhodi. Zonke izicelo zokuthola amarekhodi ziyocutshungulwa, isicelo ngasinye, ngokuhambisana nezinhlinzeko zePAIA.

Uphiko	Uhlobo lwamarekhodi
Ezokuphatha	Imibiko Yonyaka Amasu Amazinga Okusebenza Ukuhlolwa Komthelelo Omkhulu Kwezomnotho Amarekhodi ezabelomali nemibiko yakhona Amarekhodi okukhishwa kwamathenda Amarekhodi ezinkontileka Amarekhodi eSHEQ Amarekhodi eCSI Amarekhodi olulawula ulwazi Amaekhodi ezimoto nawokuhamba ngomsebenzi Ezokukhangisa – izinhlelo, icwaningo nezikhangiso. Amarekhodi Omnyango Wezabasebenzi – ukuqashwa, ukuqokwa, abashiyayo, namarekhodi amazinga okusebenza nawokulawulwa kwamalivu Amarekhodi okulawula ingcuphe Amarekhodi akwa-ICT
Ukuthuthwa Kwempahla Ngamabhanoyi (Cargo and Air Services)	Amarekhodi okulawulwa kwesikhungo Amarekhodi ezokuphepha nokuvikeleka Amarekhodi Okusebenza Amarekhodi okunakekelwa kwempahla Amarekhodi okulawulwa kwezimoto
Kwa-Property Operations	Ukunakekelwa kwesikhungo namarekhodi Amarekhodi okuqashisa ngendawo Abakhokha irenti
Kwa-AgriZone	Amarekhodi emisebenzi yakwa-AgriZone Izinhlelo zezolimo zokuziphilisa Izinhlelo zokuqeqeshwa

	Izinkontileka Amarekhodi Oluphathwa Kwamanzi Amarekhodi okumba nokulungisa umhlaba Amarekhodi okunakekela nawezobuchwepheshe Amarekhodi e-AgriLab
iConnect	Amarekhodi akwa-Operational support Amarekhodi okudayisa nawemikhiqizo Amarekhodi okuphathwa kwamaphrojekthi Amarekhodi ezikweletu nawezicelo
Ukuhlelwa Kwentuthuko neNgqalasizinda	Amarekhodi okuthengwa komhlaba – amatayitela nezivumelwano Amapulani, ucwaningo nemibiko Amarekhodi okulawulwa kwemvelo Amarekhodi okuhlela Amarekhodi ochwepheshe Amarekhodi eGIS
Izindawo zamabhizinisi ezikhethekile	Amarekhodi okugqugquzelwa nokuhehwa kotshalomali Amarekhodi esikhungo se-One-stop shop Amarekhodi Okuhlaziywa Kwemikhakha Ukulawulwa ukuphathwa kwezinhlelo

9. Inqubo Yokufaka isicelo

9. 1. Izidingo zokulandelwa Komthetho

Kuncike kwizinhlinzeko zoMthetho, ukutholakala kwamarekhodi agcinwe yiDTPC kuyophumelela kuphela uma:

- Zonke izidingo ezingokwenqubo zilandeliwe njengoba zibekwe kwiPAIA mayelana nesicelo; futhi
- Ukutholakala kwamarekhodi aceliwe kungenqatshelwe ngokwanoma yiziphi izizathu ezibekwe eMthethweni.

9. 2. Uhlelo lokufaka isicelo

Kuyolandelwa lezi zinyathelo ezilandelayo lapho kufakwa isicelo sokuthola irekhodi:

ISINYATHELO 1: ISICELO

Uma umuntu efuna ukuthola ulwazi olugcinwe yiDTPC, kumele agcwalise ifomu lokufaka isicelo (isiThasiselo 1) ebese elihambisa kwi-DIO (imininingwane iyatholakala kwiManuwali yePAIA yeDTPC). Umfakisicelo kumele aveze ukuthi ufuna ikhophi yerekhodi noma ufuna ukuzolibona irekhodi emahhovisi eDTPC.

I-DIO kumele isize umfakisicelo ngokufaka isicelo sokuthola irekhodi ukuze kuqinisekise ukuthi isicelo siyahambisana nezidingo zoMthetho. I-DIO ingasichitha isicelo serekhodi uma

singagcwaliswe ngokuphelele noma ngendlela efanele. I-DIO iyokwazisa umfakisiselo ngesaziso Sokungalandeli Inqubo mayelana nenhloso yayo yokuchitha isicelo. Uma kuba njalo, umfakisiselo angaletha eminye imininingwane ethe xaxa mayelana nesicelo sakhe.

Njengoba kusho uMthetho, kumele kukhokhwe imali engu-R35.00 uma kufakwa isicelo solwazi uma lungacelwa ngumnikazi walo.

ISINYATHELO 2: UKWEMUKELWA NOKUQINISEKISWA

I-DIO yemukela bese iqinisekisa isicelo ukuze kuqinisekise ukuthi ulwazi oludingekayo lukhona kwa-DTPC. Kube sekwemukelwa isicelo, sichithwe noma sidluliselwe ophikweni olufanele mayelana nalolo lwazi oludingekayo. Isicelo siyogunyazwa ngaphandle uma sidlulisiwe noma sichithiwe ngenxa yezizathu zokusichitha, ezibekwe kwiSahluko 4 seNgxenywe 2 yoMthetho.

Kuyokhishwa isaziso futhi kwaziswa umfakisiselo mayelana: Nezimali ezikhokhwayo (uma zikhona); isimo sesicelo sakhe kanjalo kuphinde kunikwe umfakisiselo Inombolo ewubufakazi besicelo.

ISINYATHELO 3: UKUHLANGANISWA KOLWAZI

Uma isicelo sigunyaziwe, u-DTPC uyohlanganisa alungise ulwazi bese ebala nezindleko ezihambisana nalokho.

ISINYATHELO 4: ISAZISO SOKUGCINA

Umfakisiselo kuyokwaziswa uma sekuphuthuliwe ngesicelo sakhe nangezimali okumele azikhokhele uDTPC.

ISINYATHELO 5: UKUKHOKHA NOKULETHELWA

Uma sekukhokhiwe (njengoba kushiwo esinyathelweni 4, okubandakanya nokukhokhelwa kwesinyathelo 1), ulwazi luyobe seludluliselwa kumfakisiselo.

9.3. Ulwazi olwejwayelekile

Izicelo zokuthola amarekhodi agcinwe uDTPC ngokomsebenzi wakhe njengomgwamanda kahulumeni kumele zenziwe kuphela ngefomu lesicelo njengoba kusho uMthetho, ikhophi yalo enanyathiselwe lapha njengeSithasiselo 1. Ifomu liyatholakala ngohlobo lwePDF (kulabo abafuna ukubhala ngesandla) kwiwebhusayithi yakwaDTPC.

Imithethonqubo nesigaba 18 soMthetho sithi umfakisiselo kumele alethe lolu lwazi olulandelayo:

- Imininingwane yomuntu ofuna ukuthola amarekhodi;
- Uhlobo afuna ukuwathola ngayo amarekhodi njengoba kushiwo esigabeni 29;
- Imininingwane yerekhodi afuna ukulithola;
- Imininingwane yokuxhumana yomfakisiselo (iposi/ifeksi/i-email);
- Ulimi alidinga ngalo lelo rekhodi alicelayo;
- Uma umfakisiselo efuna ulwazi egameni lomunye umuntu, ubuhlobo anabo nalowo muntu amfunela irekhodi kumele buvezwe;
- Uma umfakisiselo efuna ukwaziswa ngesinqumo ngenye indlela, ngaphezu kwesaziso esibhalwe phansi, isibonelo nje, ngocingo; lokhu kumele kuvele; futhi

- Kumele asho umfakisiselo ukuthi ufuna ukwaziswa kanjani ngesinqumo mayelana nesicelo sokuthola irekhodi /amarekhodi asifakile.

Abafakizicelo abangakwazi ukufunda nokubhala bangacela ngomlomo kwi-DIO okumele yona igcwalisele lowo muntu ifomu lesicelo innikeze nekhophi;

I-DTPC uyokwenza yonke imizamo ukukhipha irekhodi liyileyo ndlela elicelwe ngayo ngaphandle uma lokhu kuzophazamisa nokusebenza ngendlela efanele kweDTPC. I-DTPC iyophinde ibhekelele ukongiswa kwamarekhodi nokuqinisekisa amalungelo obunikazi uma sekukhishwa amarekhodi. Izimali ezikhokhelwa ukuthola amarekhodi ziyobalwa ngendlela umfakisiselo acele ngayo irekhodi (isigaba 19(3) no (4)).

Umfakisiselo kumele akhokhe izimali ezibekiwe ngaphambi kokuthi kuqale uhlelo lokuthi abhekelwe futhi anikezwe irekhodi.

9.4. Ukucutshungulwa Kwesicelo

9.4.1. IZIZATHU ZOKUNQABA

Isizathu zokunqaba zibalulwe ENGXENYENI YESIBILI yeSahluko 4 kanti kubandakanya nokuvikeleka:

- Kokufihlwa komunye umuntu odinga ulwazi ongakwazi ukuzimela phambi komthetho
- Kwamarekhodi athile abaqoqi bentela eNingizimu Afrika;
- Kolwazi lwezezimali lomunye umuntu;
- Kolwazi oluthile oluyimfihlo nokuvikelwa kolunye ulwazi lomunye umuntu;
- Kokuphepha kwabantu, nokuvikelwa kwempahla;
- Kwamarekhodi atholakale ngenxa yenqubo yezomthetho;
- Kwemihlomulo yezomnotho nezezimali yeRiphabhlikhi nokusebenza kweminye imigwamanda kahulumeni kwezezimali;
- Kolwazi locwaningo lomunye umuntu, nokuvikelwa kolwazi locwaningo lomgwamanda kahulumeni;
- Ulwazi oluthile oluphathelene nokusebenza kwemigwamanda kahulumeni.

I-DTPC ingaphinde yenqabe izicelo ezenziwe ngokuqagela noma ngokungacacile ezingaholela ekutheni kube nokumoseka okungenasidingo kwezinsizakusebenza.

9.4.2. UKUDALULA OKUYIJOKA NGENXA YENTSHISEKELO YOMPHAKATHI

Ngale kwanoma yikuphi okunye okushiwo yiPAIA, iDIO kumele igunyaze izicelo zamarekhodi eDTPC –

Ukudalulwa kwalawo marekhodi kuzoveza ubufakazi:

- obuyisiqinisekiso sokwepulwa, noma sokwehluleka ukulandela umthetho; noma
- obuzoveza ingcuphe noma ingozi olengela kuyona umphakathi kwezokuphepha; futhi
- kunentshisekelo enkulu yomphakathi engaphezu komonakalo ongadalwa ukudalulwa kwalo.

9.4.3 ISIKHATHI SOKUPHENDULA IZICELO

Kuyothatha i-DTPC izinsuku ezingama-30 ukuthatha isinqumo mayelana nesicelo.

I-DTPC iyokwazisa umfakisiselo uma ifuna ukwelula isikhathi, nesizathu salokho kwelulwa kwesikhathi njengoba kubekiwe esigabeni 26(1) sePAIA.

10. Inqubo Yokukhokha

10.1. Izimali ezikhokhwayo

UMthetho ubeka izinhlobo ezimbili zezimali ezikhokhwayo okuyilezi:

- o Imali yokufaka isicelo, okuyimali engaguquki ekhokhelwa abantu abacela amarekhodi okungesiwona awabo; kanye
- o Nemali yokukhokhela irekhodi, okumele ibalwe ngokubhekelela izindleko zokuligaya kabusha, ukulibheka nesikhathi sokulilungisa kanjalo nezokuliposa.

10.1.1. Imali yesicelo

Wonke umuntu ofaka isicelo ongaceli irekhodi lakhe siqu kumele akhokhe imali edingekayo yokufaka isicelo. IDIO kumele yazise umuntu ofaka isicelo ngokuthi kudingeka akhokhe izimali ezinqunyiwe (uma zikhona) ngaphambi kokuthi kucutshungulwe isicelo sakhe ngokwesigaba 22(1) soMthetho.

Imali yokufaka isicelo ekhokhelwa iDTPC ngu R35.00 kanti ikhokhwa lapho umuntu efaka isicelo ngasinye. Le mali ayibuyeli emuva.

10.1.2. Imali yokuthola irekhodi

Imali yokuthola irekhodi kumele inqunywe ngokubungako bamarekhodi nangendlela adingeka eyiyona.

Imali yesicelo nemali yokuthola irekhodi ibhaliwe kwiSithasiselo 3, njengoba sibekiwe kwiGazethi 23119 yangomhla ka 15 Febhuwari 2002, iSaziso sikaHulumeni No. R.187.

10.2. Isaziso Ngezimali Ezikhokhwayo

I-DIO kumele yazise umfakisicelo (ngale komuntu ocela irekhodi lakhe) ngesaziso, icele ukuba akhokhe imali yokufaka isicelo (R35.00) ngaphambi kokuthi sicutshungulwe isicelo serekhodi. Uma iDIO isithathe isinqumo mayelana nesicelo somfakisicelo, uyobe esaziswa ngaleso sinqumo ngendlela umfakisicelo afuna ukwaziswa ngayo.

Uma selibhekiwe irekhodi futhi lalungiswa ukuze lidalulwe, kubandakanya izinhlelo zokuthi lelo rekhodi litholakale ngaleyo ndlela elicelwe liyiyona, kanti ukulungiswa kwalo kuzothatha amahora angaphezu kwalawo abekwe kwimithethonqubo, iDIO iyokwazisa umfakisicelo ukuba akhokhe imali yediphozi yokuthola irekhodi, eyokhokhwa kuphela uma isicelo sakhe sivunyiwe. IDIO iyologodla irekhodi kuze kube umfakisicelo ukhokha zonke izimali ezikhokhwayo.

Uma isicelo sivunyiwe, kumele kuphinde kukhokhwe enye imali yokulibheka, yokulilungisa neyokuligaya kabusha nokukhokhelwa kwanoma yisiphi esinye izikhathi esingale kwalesi esinqunyiwe sokubheka nokulungisa irekhodi ukuze lidalulwe kubandakanya izinhlelo zokulenza litholakale ngendlela elifuneka liyiyona. Uma isikhokhiwe idiphozi mayelana nesicelo sokuthola irekhodi, esinqatshiwe, iDIO kumele umbuyisele umfakisicelo leyo mali yediphozi.

10.3. Iminingwane yasebhange ye-DTPC

Ibhange: ABSA

Uhlobo lwe-akhawunti: Current Account Public Sector

Inombolo ye-akhawunti: 4056873817

Ikhodi yegatsha: 634926

Inkomba: PAIA Isibongo (sombakicelo).

Ubufakazi bokukhokha kumele buthunyelwe kwiDIO ngaphambi kokuthi kuqale izinhlelo zokucubungula isicelo futhi kumele buvele esitatimendeni sezimali sasebhange seDTPC (imininingwane yokuxhumana ikhona kwimanuwali yeDTPC). Ubufakazi bokukhokha kumele buhambisane nefomu lesicelo.

10.4. Ukukhululwa ngokwesigaba 22(8)

Umfakisicelo ofaka isicelo serekhodi lakhe akudingeki ukuba akhokhe imali yokufaka isicelo.

Laba bantu abalandelayo bakhululiwe ekukhokheni imali yokuthola irekhodi ngokwesigaba 22(8) soMthetho:

- Umuntu oyedwa oholo lakhe, ngemuva kwezimali ezidonswayo ezisemthethweni, elingeqi ku R14 712 ngonyaka; kanye
- Nabantu abashadile noma umuntu iholo likawakwakhe elingeqi ku-R27 192 ngonyaka uma sekudonswe zonke izimali ezidonswayo.

Kuyanqunywa futhi ukuthi:

- Uma izindleko zokuqoqa noma yiziphi izimali ezihlongozwe esigabeni 22 soMthetho zingaphezu kwalezo zimali ezibiziwe, lezo zimali akumele zikhokhwe; futhi
- Izimali zokuthola irekhodi ezishiwo esigabeni 22(8) soMthetho angeke zikhokhwe ngumuntu ofake isicelo serekhodi lakhe.

Izimali zesicelo nezerekhodi angeke zikhokhwe ngumsebenzi obhekele ukulungisa impahla noma ophenya ngokulungisa impahla ngenhloso yokwenza uphenyo noma lokuthola ulwazi mayelana nokulungiswa kwempahla ngokwezinhlinzeko zoMthetho iMaintenance Act No. 99 ka 1998 noma ngokwemithethonqubo eyakhiwe ngaphansi kwesigaba 44 salowo Mthetho.

11. Ezinye izixazululo ezikhona, Isigaba 14(1) (H)

11.1. Isicelo sasenkantolo

Umfakisicelo (noma omunye umuntu wesithathu, uma ekhona) angacela usizo lwanoma iyiphi inkantolo, enamandla okwahlulela ngalokhu, mayelana nalezi zinqumo ezilandelayo zeCIO/DIO:

- Ukwenqaba sonke noma ingxenye yesicelo serekhodi;
- Isamba semali okumele ikhokhwe;
- Ukwelulwa kwesikhathi sokubhekana nesicelo; noma
- Wuhlobo okuzotholakala ngalo ulwazi.

Zonke izincwadi ezithinta umthetho kumele zihanjiswa kwiCIO/DIO ebhekene nesicelo zingakedluli izinsuku ezingu-30.

12. Ukushintshwa kwemanuwali Isigaba 14 (2)

Lemanuwali liyoshintshwa kanye ngonyaka noma uma ulwa olukulo kumele lushintshwe.

13. Ukuba khona kwemanuwali elichazayo, Isigaba 14 (3)

Leli bhukwana likhona kulezi zindawo ezilandelayo:

- Inhlakohhovisi ye-DTPC- ngamahora okusebenza 08:00 – 16:30
29°S
7 Umsinsi Junction
La Mercy
Kwazulu Natal, 4399
- Kwiwebhusayithi yeDTPC: www.dubetradeport.co.za; kanye
- NeKhomishana Yamalungelo Abantu eNingizimu Afrika (SAHRC)

14. EZINYE IZITHASISELO

Isithasiselo 1: IFomu Lesicelo Serekhodi

Isithasiselo 2: Amarekhodi Akhona Ngokwawo Nokutholakala kwawo

Isithasiselo 3: IFomu Lemali Ekhokhwayo